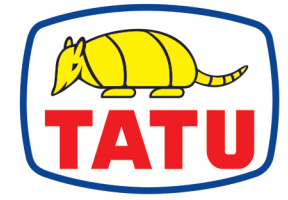


GAICR

WHEEL OFFSET DISK HARROW

IDEALLY SUITED FOR TOUGH PLOWING JOBS



MARCHESAN



**THE BRAND
OF THE LAND**

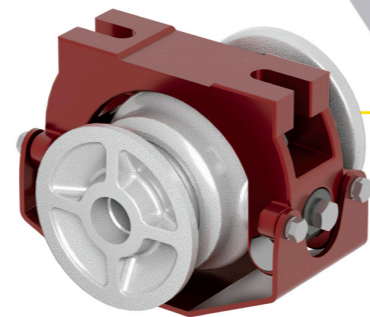
The model **GAICR** - Wheel Offset Disk Harrow, is specially designed to operate with wheel or crawler tractors. It is ideally suited for tough plowing jobs found in new cleared forest areas or heavy sugar cane stubble left after the last ratoon crop. All models have hydraulic controlled depth gauge and transport wheels, which make them more maneuverable and easier to transport to other fields.

STANDARD FEATURES:

- Welded and rugged tubular steel frames;
- Stabilizer bar for front and rear disc gangs leveling;
- Disc gang angle adjusted mechanically;
- Perforated offset bar to allow lateral drawbar adjustments under varying draft conditions;
- Box type construction drawbar with standard drawbar plates;
- Hydraulic controlled depth gauge and transport wheels mounted to wheel hubs that have greasable tapered roller bearings;
- Double acting hydraulic cylinders with hoses and quick couplers;
- Rugged 1.5/8" round, heat-treated steel alloy disc gang axles;
- Greasable or oil bath disc gang bearing assemblies;
- Cast iron disc spacer spoos;
- Heavy duty disc blade scraper;
- Standard tool kit.

DUROMARK SWIVEL OIL BATH BEARING (DMO):

This oil bath bearing has a swivel support, which allows the disk sections to rotate more freely, reducing effort and consequently the tractor's fuel consumption, in addition to increasing the durability of the bearing's internal components. It also features fittings for easy assembly and disassembly. They are equipped with dual tapered roller bearings and Duo-Cone seals with permanent oil lubrication.



TECHNICAL SPECIFICATIONS:

Model	Number of the Disc Blades	Working Width		DISC BLADES		Weight*		Potência no Motor (cv)
		mm	ft.in	Dimensions	Spacing	kg	lbs	
GAICR	12	1.600	5' 3"	24" x 4,75 mm 26" x 6,00 mm 26" x 7,50 mm 28" x 6,00 mm 28" x 7,50 mm 30" x 7,50 mm	270mm	1.730	3.813	70 - 80
	14	1.750	5' 9"			1.812	3.994	80 - 90
	16	2.000	6' 7"			2.118	4.669	100 - 110
	18	2.300	7' 6"			2.251	4.962	110 - 120
	20	2.570	8' 5"			2.436	5.370	120 - 135
	22	2.840	9' 4"			2.600	5.732	135 - 150
	24	3.110	10' 2"			2.725	6.007	150 - 165
	25	3.250	10' 8"			2.659**	5.862	165 - 180
	26	3.380	11' 1"			2.814	6.203	170 - 180
	28	3.650	11' 12"			2.952	6.508	180 - 200
	29	3.780	12' 5'			2937**	6.474	190 - 200
	30	3.920	12' 10"			3.171	6.990	190 - 200
	32	4.180	13' 8"			4.654	10.260	200 - 220
	36	4.720	15' 6"			4.558	10.048	220 - 240
	40	5.250	17' 3"			4.910	10.824	240 - 260
	44	5.440	17' 10"			5.413	11.933	260 - 280
	48	6.230	20' 5"			5.679	12.520	280 - 300
	52	6.670	21' 10"			7.200	15.873	300 - 320
56	7.171	23' 6"	7.434	16.389	320 - 340			
60	7.660	25' 2"	7.670	16.909	340 - 360			

* Weight with Ø 28" x 7,5 mm disc blades. | ** Weight with Ø 28" x 6,0 mm disc blades. | *** Weight with Ø 30" x 7,5 mm disc blades.
 > Axle Diameter: 1.5/8" (41mm) or 1.3/4" (44,45mm).

Simple Wheelset

- GAICR 12 and 14 disc blades: 6,00x16 tires
- GAICR 16 to 30 disc blades: 7,50x16 tires
- GAICR 18, 20, 24, 26, 28 and 30 disc blades: 11L15 tires
- GAICR 32 to 48 disc blades: 400/600 tires
- GAICR 52, 56 and 60 disc blades: 500/60 tires

***IMPORTANT:** RECOMMENDED HORSEPOWER MAY VARY DEPENDING ON SOIL CONDITIONS SUCH AS COMPACTION LEVEL, MOISTURE CONTENT, SOIL TYPE, TERRAIN, AND OTHER RELATED FACTORS.



MARCHESAN IMPLEMENTOS E MÁQUINAS AGRÍCOLAS TATU S.A.

CNPJ.: 52.311.289/0001-63 | Inscr. Est.: 441.000.151.114

Av. Marchesan, 1979 | ZIP CODE 15994-900

Phone: +55 (16) 3382.8282 | Matão-SP-Brazil

www.tatu.ag



A MARCHESAN S.A reserves the right to perfect or change the characteristics of its products, without prior notice and without the obligation to proceed with those already marketed. The photos are only illustrative. Rev. 07 - 09/2025



PROTEJA O MEIO AMBIENTE. AO INUTILIZAR ESTE FOLHETO, NÃO JOGUE EM VIAS PÚBLICAS.